



# ST-72 / ST-96

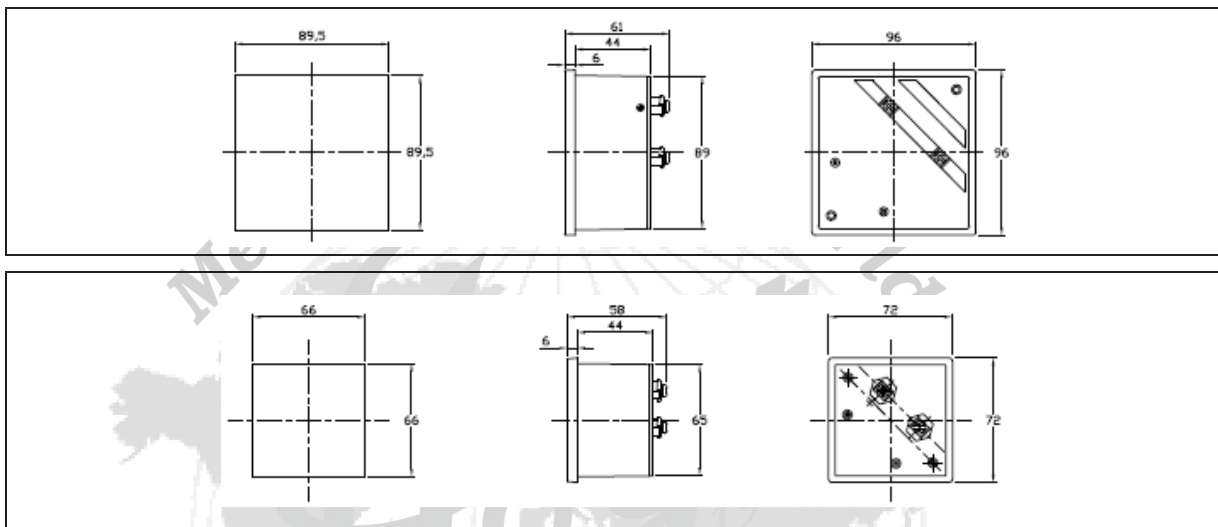
## Analog Meters



**ST-96**



**ST-72**



**Measuring Ranges :**

**Moving Coil Type**

DC uA	DC mA	DC A	DC mV	DC V
50	1	1	50	1
100	1.5	1.5	60	1.5
150	2.5	2.5	100	2.5
200	3	3	500	3
250	5	5		5
300	10	10		10
400	50	15		15
500	100	20		20
600	500	25		25
800	800	30		30
		40		40
		50		100
		60		150
				200
				300
				400
				600

**Moving Iron Type**

AC mA	AC A	AC V
100	1	100
500	1.5	150
	2.5	250
	5	300
	10	500
	15	600
	20	
	25	
	30	
	40	
	60	
	100	

- **Test Voltage :** 2kV 50-60Hz
- **AC Ampere Over Load Scale :** 200%,300%,500%
- **Composition :** Glass Window, ABS resin frame and case, Bakelite base
- **Color :** Black case and frame, white scale plate and meter body
- **Pointer :** Stick shape in black color
- **Pointer Length :** ST-96 : 55mm  
ST-72 : 38mm

AC Ammeters above 100A require a basic meter combined with an external CT (Current Transformer)

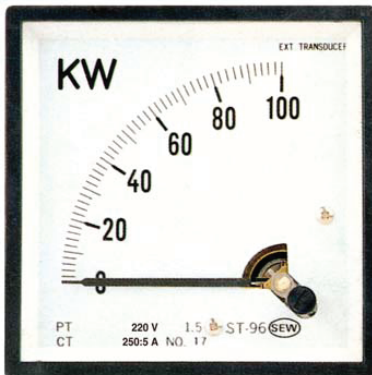
Measuring range	CT ratio	Measuring range	CT ratio
0-5 A		0-250 A	250/5
0-10 A	10/5	0-300 A	300/5
0-15 A	15/5	0-400 A	400/5
0-20 A	20/5	0-500 A	500/5
0-25 A	25/5	0-600 A	600/5
0-30 A	30/5	0-750 A	750/5
0-40 A	40/5	0-800 A	800/5
0-50 A	50/5	0-1000 A	1000/5
0-60 A	60/5	0-1200 A	1200/5
0-75 A	75/5	0-1500 A	1500/5
0-100 A	100/5	0-2000 A	2000/5
0-150 A	150/5	0-2500 A	2500/5
0-200 A	200/5	0-3000 A	3000/5

AC Voltmeters above 600 Volts require basic 150V meter combined with an external PT (Potential Transformer)

Measuring range	PT ratio
0-300 V	220/110 V
0-600 V	440/110 V
0-4.5 kV	3300/110 V
0-9 kV	6600/110 V
0-18 kV	13200/110 V
0-30 kV	22000/110 V
0-45 kV	33000/110 V

DC Ammeters above 50A require a basic 50mV meter combined with an external shunt

For connection to shunt measuring range		
0-0.5A	0-100 A	0-1200 A
0-7.5A	0-150 A	0-1500 A
0-10 A	0-200 A	0-2000 A
0-15 A	0-300 A	0-3000 A
0-20 A	0-400 A	0-4000 A
0-30 A	0-500 A	0-5000 A
0-40 A	0-600 A	0-6000 A
0-50 A	0-750 A	0-7000 A
0-75 A	0-1000 A	0-10000 A



**ST-72  
ST-96 KW Meter**

ST-96 and ST-72 KW instruments are used for measuring the active and reactive power of AC single and three phase networks. They are primarily built in switchboards and electric devices.

- **Measuring Range :** 110V,220V,380V,440V/1A,5A
- **Accuracy :** Class 1.5
- **Frequency :** 45-65 Hz
- **Test Voltage :** 2 kV,50-60 Hz
- **Pointer Length :** ST-96 : 55mm  
ST-72 : 38mm
- **Composition :** Glass window, ABS resin frame and case, Bakelite base mounting fitting included and meter body
- **Color :** Black base and frame, white scale plate
- **Pointer :** Stick shape in black color
- **Transducer :** External



**ST-72  
ST-96 Hz Meter**

ST-96 and ST-72 Hz instruments are suitable for frequency measurements form AC current networks and can be used in power engineering systems, power plants, switch and test rooms. They can be built in switchboards, measuring desks and electrical equipments.

- **Measuring Range :** 45-55Hz
- **Accuracy :** Class 1.5
- **Working Position :** Vertical
- **Rated Voltage :** 110V,220V,380V,440V
- **Limit Of Voltage Fluctuation :**  $\pm 20\%$
- **Consumption :** Max. 15mA
- **Test Voltage :** 2 kV,50-60 Hz
- **Pointer Length :** ST-96 : 55mm  
ST-72 : 38mm
- **Composition :** Glass window, ABS resin frame and case, Bakelite base mounting fitting included and meter body
- **Color :** Black base and frame, white scale plate
- **Pointer :** Stick shape in black color



**ST-96 COS $\Phi$  Meter**

ST-96 COS  $\Phi$  instruments are used for measuring the power factor of AC single and three phase networks. They are also built primarily in switchboards and electric devices.

- **Measuring Range :** 110V, 220V 380V, 440V/1A, 5A
- **Accuracy :**  $\pm 5^\circ$  phase angle
- **Frequency :** 45~65Hz
- **Test Voltage :** 2 kV,50-60 Hz
- **Pointer Length :** 55mm
- **Composition :** Glass window, ABS resin frame and case, Bakelite base mounting fitting included and meter body
- **Color :** Black base and frame, white scale plate
- **Pointer :** Stick shape in black color